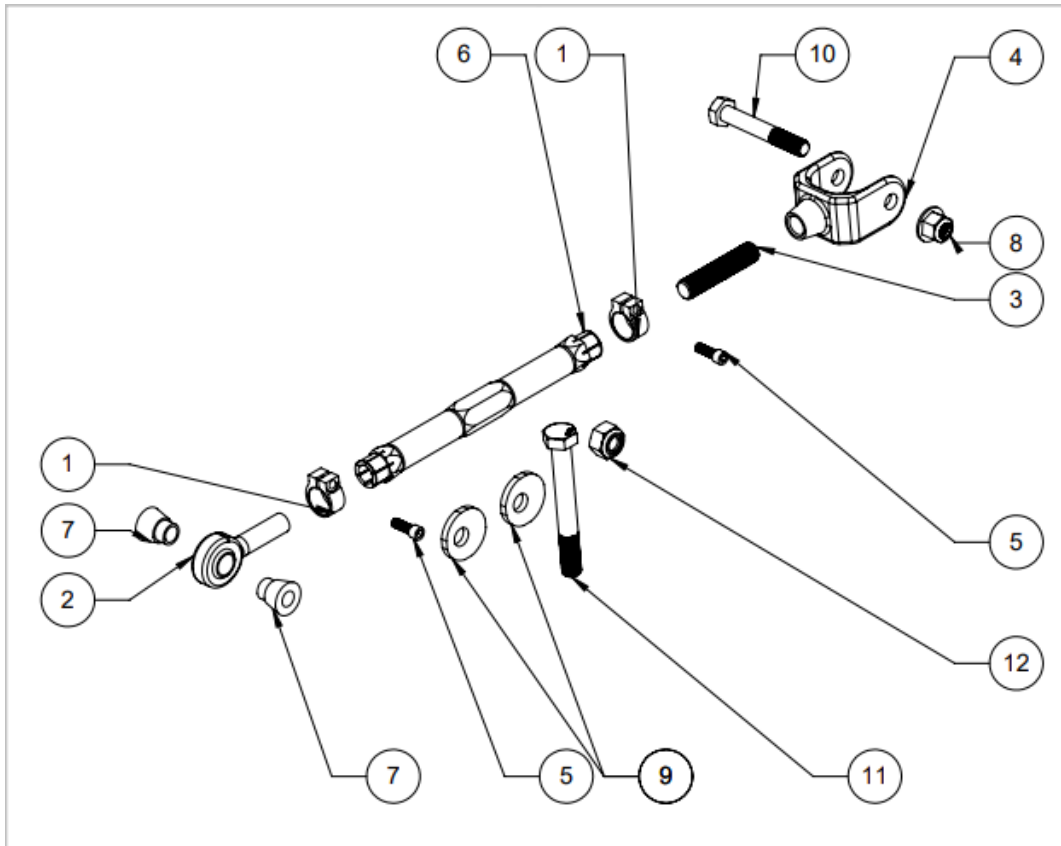


# Rear Lower Control Arm Kit Installation Instructions SPL RUAEL CAM6



ITEM NO.	PART NUMBER	DESCRIPTION	QTY.
1	90010	CLAMP, SPLIT SHAFT, 5/8	4
2	JM10TC-F1	ROD END, TEFLON, 5/8-18	2
3	TSTUD10LH-275	THREADED SS STUD	2
4	21106	CAMARO CLEVIS	2
5	14-20-75SHCS	0.75" SOCKET HEAD CAP SCREW	4
6	25011	DOGBONE, FLCA CASTER ARM, FRs	2
7	90060	ALUMINUM SPACER	4
8	54008	NUT, HEX, FLNG LOCK, ZNC, M12 X 1.75	2
9	11616	CAM6 REAR CAMBER ARM ECCENTRIC	4
10	52013	ZINC YELLOW-CHROMATE PLATED STEEL HEX HEAD SCREW	2
11	52010	BOLT, CAP, HEX, ZNC, 10.9, M14 X 1.5 X 110L	2
12	54006	NUT, PREV TRQ, M14 X 1.50	2

SPLPARTS CONFIDENTIAL:  
THIS DOCUMENT AND THE INFORMATION CONTAINED IN IT ARE  
CONFIDENTIAL, AND CANNOT BE COPIED OR DISCLOSED IN WHOLE OR  
IN PART WITHOUT THE EXPRESS WRITTEN CONSENT OF SPLPARTS.

**SPLPARTS INC.**

SIZE	PART NO.	REV.
A	RUAEL CAM6	
FILE	SCALE	SHEET
	1:4	1 OF 1

1. Lift the rear of the vehicle and remove the rear wheels.
2. Remove the OEM arm. It is the uppermost arm on the rear knuckle.
3. Set SPL Parts Arm next to the OEM arm. Change the length of the SPL arm by rotating the dogbone (6) until it is the same length as OEM, lining up the holes with the OEM bolts.
4. Check to make sure there are no clearance issues between the knuckle and the inside of the clevis. Casting inconsistencies in the knuckle mean there is occasionally a small amount of material that needs to be filed off the knuckle.
5. Install the SPL Parts Arm using the OEM and provided (8,10) hardware. Tighten to 74 ft-lb. **DO NOT OVERTORQUE.** *SPL Parts is not liable for any issues due to overtorque.*
6. Once the Arm is installed, check the FK Rod End (2) at the chassis is centered in its articulation. Tighten the Blue Titanium Socket Head Cap Screws (5) until the assembly cannot rotate, up to maximum of 150 **IN. lbs.**
7. Remove the OEM eccentric bolt out of the spring bucket arm.
8. Place one of the lockout washer (9) on the 14mm bolt (11), then place this through the arm. Using the small flats on each side, you can either choose to put it in the maximum, minimum, or middle point based on how you want to align the vehicle. Make sure they are installed so that the bolt hole is in the same position on each side of the vehicle, or the car will handle poorly. Place the other lockout washer on the other side of the spring bucket arm then tighten the nut (12) down to 100 Ft-lb.
9. Professional alignment is recommended. Take your vehicle to an alignment shop, bringing these instructions with you to ensure that the arm is adjusted correctly.

## Adjusting the Length of the Links for Alignment

Loosen the Aluminum Clamps on both ends of the Aluminum Dogbone. Turn the Dogbone so as to thread in/out the FK Rod Ends. Threading in/out the Dogbone will in turn thread out/in both rod ends. Once the assembly is the correct length, tighten down the Aluminum Clamps by torquing the Blue Titanium Socket Head Cap Screws (5) to 150 **in. lbs.** maximum, or until the assembly cannot be rotated easily.

Note the thread engagement on the rod end should not exceed the measurement pictured on the right (0.625"). For the Clevis (4) end, there can be up to (0.625") of thread exposed.



## **ONE-YEAR LIMITED WARRANTY AND DISCLAIMER**

*All SPL brand products are intended for **Off Road Use Only** and carry a one year limited warranty. See below for details. All other branded products carry their respective manufacturer warranty.*

*SPL PRO suspension products warranted to be free of defects in material and workmanship for one (1) year from the date of purchase.*

*If a product fails to meet specifications, SPL PARTS INC will, at its election, repair, replace, or make appropriate adjustment, if SPL PARTS INC determines to its satisfaction that the product is defective in material or workmanship, i.e. contains a defect arising out of the manufacture of the product and not a defect caused by other circumstances, including, but not limited to accident, misuse, abuse, unforeseeable use, neglect, alteration, improper installation, improper adjustment, improper repair, or failure caused by other equipment or interaction with other equipment. SPL PARTS INC is not responsible for labor charges, removal charges, installation, or other incidental or consequential costs. In no event shall the liability of SPL PARTS INC exceed the purchase price of the product.*

*SPL PARTS INC makes no other warranties, either expressed or implied, including limitation warranties as to merchantability or fitness for a particular purpose. SPL PARTS INC shall not be liable for, and buyer assumes all risk of, any advice or failure to provide advice by SPL PARTS INC to buyer regarding the product or use and installation of product. SPL PARTS INC shall not be liable for any special, incidental or consequential damages.*

*If the purchaser of the product shall fail to pay when due any portion of the purchase price, or fail to meet any terms required under contract agreed on at time of purchase, all warranties and remedies granted may be terminated.*

***Using any SPL arm as a tie/strap down point for a dyno session or transport will void the warranty.***