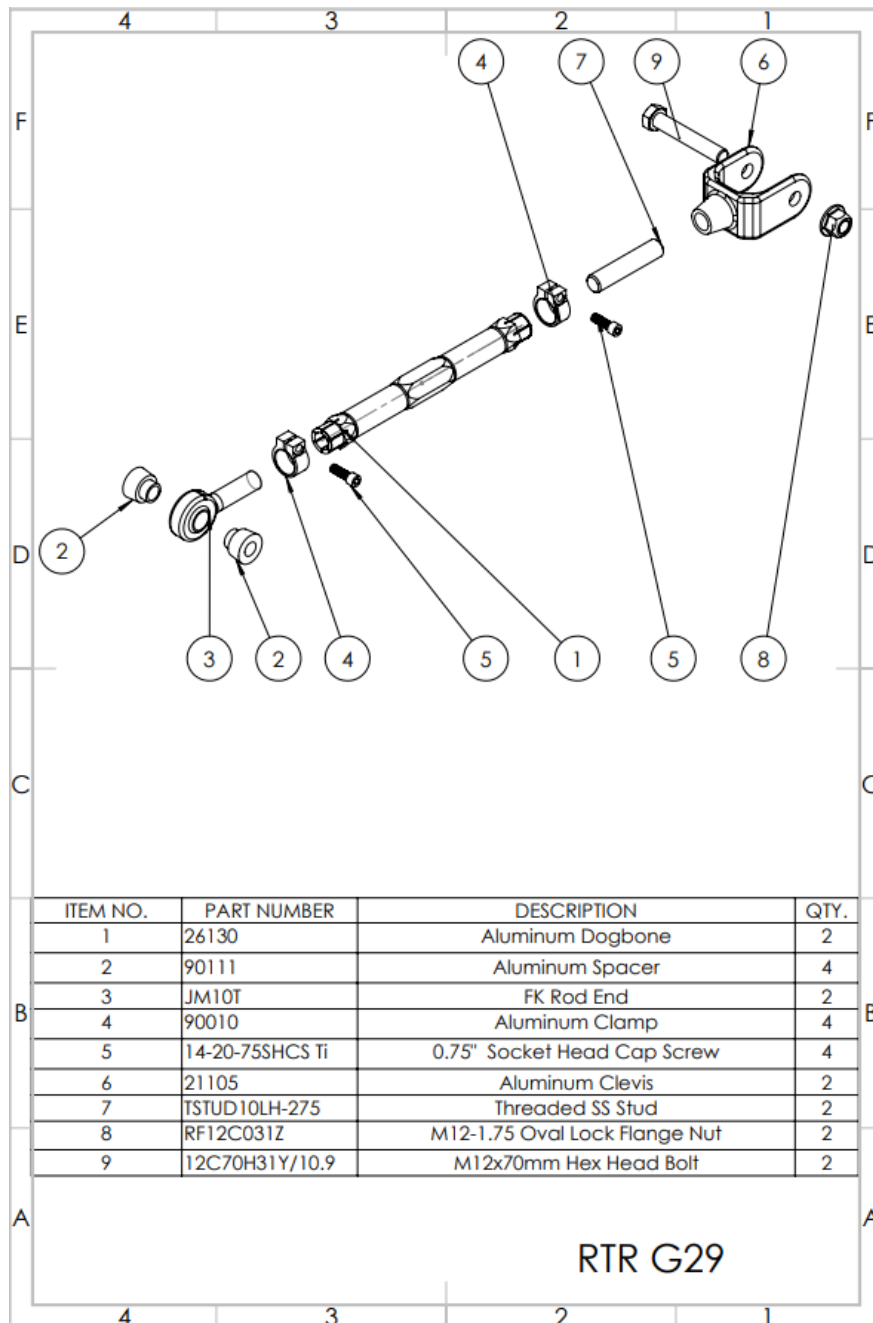


Rear Wishbone Links Kit Installation Instructions SPL RTR G29





1. Remove the OEM arm.
2. Set SPL Parts Arm next to the OEM arm. Use the bolts through the stock arm to set the SPL Parts Arm to the exact length of the OEM arm, ensuring equal thread engagement on both ends. Note the groove on one side of the SPL arm to indicate the left-hand threads.
3. Install the SPL Parts Arm using the OEM hardware. Tighten the nuts to **74 ft. lbs.** (100 N/M) at both ends. **DO NOT OVERTORQUE.** *SPL Parts is not liable for any issues due to overtorque.*
4. Once the Arm is installed, check the FK Rod End (3) at the chassis is centered in its articulation. Tighten the Blue Titanium Socket Head Cap Screws (5) until the assembly does not rotate, to a maximum of **150 IN. lbs.**
5. Professional alignment is recommended. Take your vehicle to an alignment shop, bringing these instructions with you to ensure that the arm is adjusted correctly.
6. Run the suspension through its travel to make sure that there are no contact issues between the arm and anything on the knuckle, as the dogbone can get very close to the knuckle as you change the geometry. We are not responsible for contact between our parts and the knuckle due to aftermarket geometry changes.

Adjusting the Length of the Links for Alignment

Loosen the Aluminum Clamps on both ends of the Aluminum Dogbone. Turn the Dogbone so as to thread in/out the FK Rod Ends. Threading in/out the Dogbone will in turn thread in/out both rod ends. Once the assembly is the correct length, tighten down the Aluminum Clamps by torquing the Blue Titanium Socket Head Cap Screws (7) to 150 **in. lbs.** maximum, or until the assembly does not rotate. Note the thread engagement on the rod end should not exceed the measurement pictured on the right (0.625"). For the Clevis (1) end, there can be up to 0.625" of thread exposed.



ONE-YEAR LIMITED WARRANTY AND DISCLAIMER

*All SPL brand products are intended for **Off Road Use Only** and carry a one year limited warranty. See below for details. All other branded products carry their respective manufacturer warranty.*

SPL PRO suspension products warranted to be free of defects in material and workmanship for one (1) year from the date of purchase.

If a product fails to meet specifications, SPL PARTS INC will, at its election, repair, replace, or make appropriate adjustment, if SPL PARTS INC determines to its satisfaction that the product is defective in material or workmanship, i.e. contains a defect arising out of the manufacture of the product and not a defect caused by other circumstances, including, but not limited to accident, misuse, abuse, unforeseeable use, neglect, alteration, improper installation, improper adjustment, improper repair, or failure caused by other equipment or interaction with other equipment. SPL PARTS INC is not responsible for labor charges, removal charges, installation, or other incidental or consequential costs. In no event shall the liability of SPL PARTS INC exceed the purchase price of the product.

SPL PARTS INC makes no other warranties, either expressed or implied, including limitation warranties as to merchantability or fitness for a particular purpose. SPL PARTS INC shall not be liable for, and buyer assumes all risk of, any advice or failure to provide advice by SPL PARTS INC to buyer regarding the product or use and installation of product. SPL PARTS INC shall not be liable for any special, incidental or consequential damages.

If the purchaser of the product shall fail to pay when due any portion of the purchase price, or fail to meet any terms required under contract agreed on at time of purchase, all warranties and remedies granted may be terminated.

Using any SPL arm as a tie/strap down point for a dyno session or transport will void the warranty.