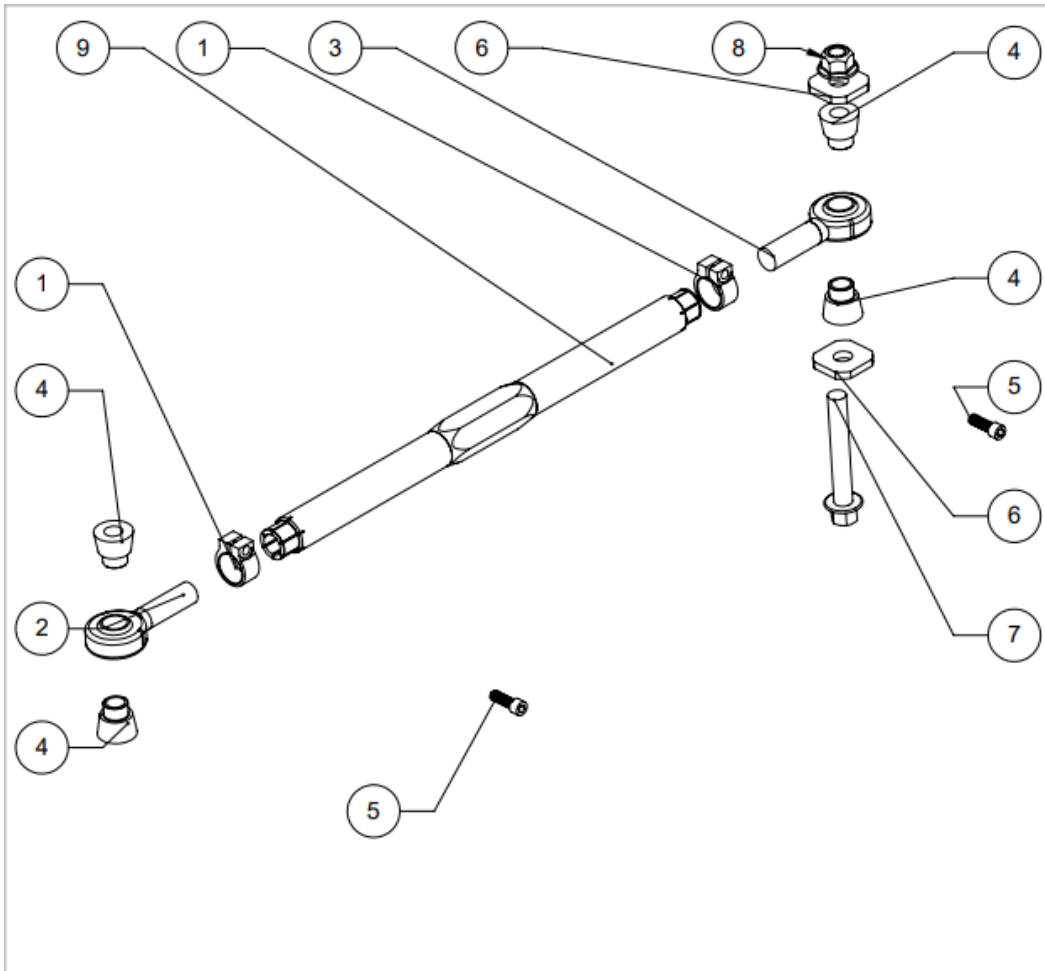


Rear Toe Arms Installation Instructions SPL RTAEL ATS-V



ITEM NO.	PART NUMBER	DESCRIPTION	QTY.
1	90010	CLAMP, SPLIT SHAFT, 5/8	4
2	JM10T	ROD END	2
3	JML10T	FK ROD END	2
4	90201	ALUMINUM SPACER	8
5	14-20-75SHCS	0.75" SOCKET HEAD CAP SCREW	4
6	11603	ECCENTRIC LOCKOUT	4
7	12C80H31Y/10.9	80mm M12X.1.75" HEX CAP SCREW	2
8	RF12C031Z	M12-1.75 OVAL LOCK FLANGE NUT	2
9	22707	ALUMINUM DOGBONE	2

SPLPARTS CONFIDENTIAL:
THIS DOCUMENT AND THE INFORMATION CONTAINED IN IT ARE
CONFIDENTIAL, AND CANNOT BE COPIED OR DISCLOSED IN WHOLE OR
IN PART WITHOUT THE EXPRESS WRITTEN CONSENT OF SPLPARTS.

SPLPARTS INC.

SIZE	PART NO.	REV.
A	RTAEL ATS-V	
FILE	SCALE	SHEET
	1:8	1 OF 1

Thank you for your purchase of this SPL Parts performance suspension product. Please follow these instructions exactly to ensure that the product is able to function to the best of its ability, and you can achieve the most performance out of your vehicle.

TOOLS NEEDED:

18mm socket and wrench 3/16 allen wrench

1. Remove the OEM arm (18mm bolts).
2. Set SPL Parts Rear Toe Arm next to the OEM arm. Use the bolts through the stock arm to set the SPL Parts Arm to the exact length of the OEM arm ensuring equal thread engagement on both ends. Note the groove on one side of the arm to indicate the left-hand threaded side.
3. Line up the eccentric lockout washers (7) with the grooves in the subframe, then slide the arm into place, followed by the bolt. This will keep you toe alignment from slipping under hard cornering.
4. Install the SPL Parts Arm using OEM hardware at knuckle and at the subframe and tighten them to **74ft. lbs.** (100 N/M). **DO NOT OVER-TORQUE!** *SPL Parts is not liable for any issues due to over-torque.*
5. Set toe and tighten the Blue Titanium Socket Head Caps Screws (6) to **150 in-lb** maximum. This is generally accomplished with a normal 3/16" allen key, but make sure that the allen key is fully seated. The goal is to make sure the linkage cannot be rotated without excessive force.
6. Have your car professionally aligned as it is nearly impossible to replicate the original settings. Take your vehicle to an alignment shop, and bring these instructions with you to ensure that the arm is adjusted correctly.
7. Be safe and enjoy your new upgrade!

ONE-YEAR LIMITED WARRANTY AND DISCLAIMER

All SPL brand products are intended for **Off Road Use Only** and carry a one year limited warranty. See below for details. All other branded products carry their respective manufacturer warranty.

SPL PRO suspension products warranted to be free of defects in material and workmanship for one (1) year from the date of purchase.

If a product fails to meet specifications, SPL PARTS INC will, at its election, repair, replace, or make appropriate adjustment, if SPL PARTS INC determines to its satisfaction that the product is defective in material or workmanship, i.e. contains a defect arising out of the manufacture of the product and not a defect caused by other circumstances, including, but not limited to accident, misuse, abuse, unforeseeable use, neglect, alteration, improper installation, improper adjustment, improper repair, or failure caused by other equipment or interaction with other equipment. SPL PARTS INC is not responsible for labor charges, removal charges, installation, or other incidental or consequential costs. In no event shall the liability of SPL PARTS INC exceed the purchase price of the product.

SPL PARTS INC makes no other warranties, either expressed or implied, including limitation warranties as to merchantability or fitness for a particular purpose. SPL PARTS INC shall not be liable for, and buyer assumes all risk of, any advice or failure to provide advice by SPL PARTS INC to buyer regarding the product or use and installation of product. SPL PARTS INC shall not be liable for any special, incidental or consequential damages.

If the purchaser of the product shall fail to pay when due any portion of the purchase price, or fail to meet any terms required under contract agreed on at time of purchase, all warranties and remedies granted may be terminated.

Using any SPL arm as a tie/strap down point for a dyno session or transport will void the warranty.