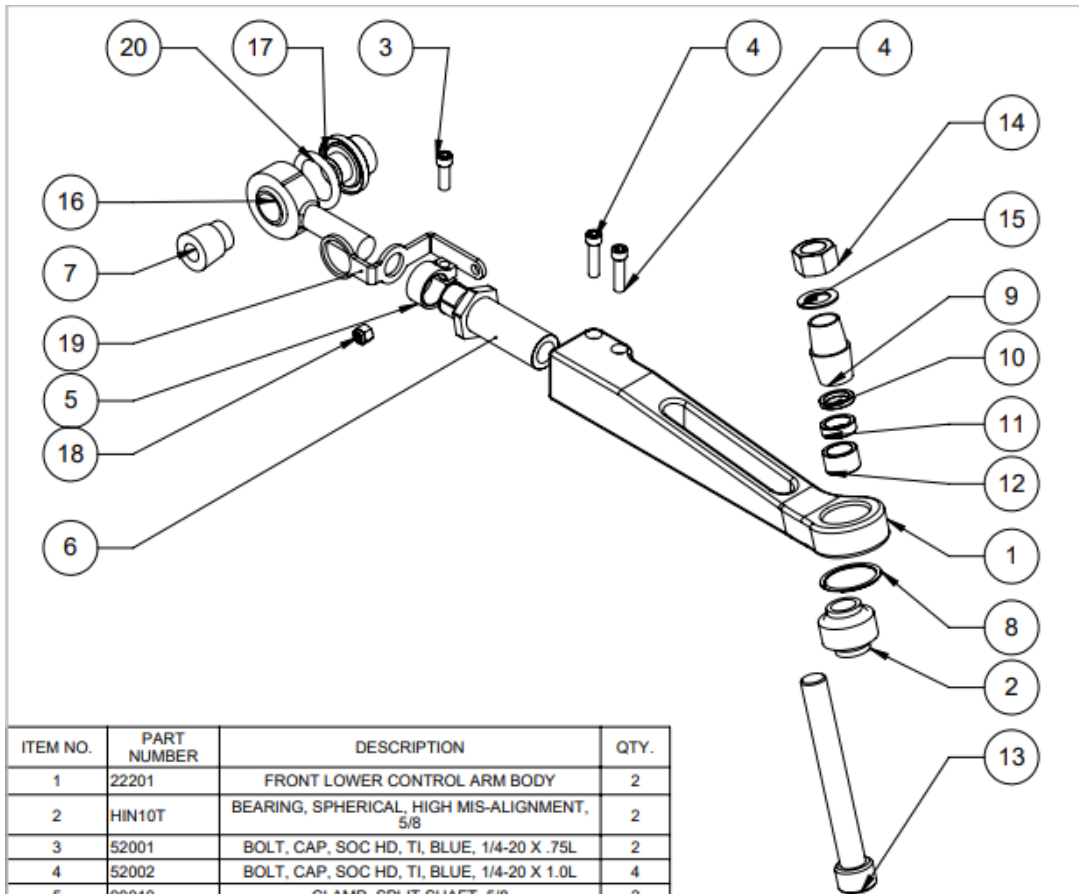


Front Lower Control Arm Installation Instructions SPL FLCA CAM6



| ITEM NO. | PART NUMBER | DESCRIPTION | QTY. |
|----------|-------------|---|------|
| 1 | 22201 | FRONT LOWER CONTROL ARM BODY | 2 |
| 2 | HIN10T | BEARING, SPHERICAL, HIGH MIS-ALIGNMENT, 5/8 | 2 |
| 3 | 52001 | BOLT, CAP, SOC HD, TI, BLUE, 1/4-20 X .75L | 2 |
| 4 | 52002 | BOLT, CAP, SOC HD, TI, BLUE, 1/4-20 X 1.0L | 4 |
| 5 | 90010 | CLAMP, SPLIT SHAFT, 5/8 | 2 |
| 6 | 90011 | DOUBLE ADJUSTER, 1-12 LH OD, 5/8-18 RH ID, .7 BACKDRILL | 2 |
| 7 | 90142 | ALUMINUM SPACER | 2 |
| 8 | 62002 | RETAINING RING, SPIRAL, INTERNAL, SST, 1.375 BORE | 2 |
| 9 | 90138 | TAPERED SPACER | 2 |
| 10 | 90113 | SPACER, FLAT, SST, 1/8 | 2 |
| 11 | 90114 | SPACER, FLAT, SST, 1/8 | 2 |
| 12 | 90115 | SPACER, FLAT, SST, 1/8 | 2 |
| 13 | 52011 | BOLT, CAP, SOC HD, ZNC, GR8, 5/8-18 X 5.00L | 2 |
| 14 | 54003 | NUT, HEX, CTR LOCK, ZNC, GR8, 5/8-18 | 2 |
| 15 | 53001 | WASHER, SHIM, ZNC, 5/8 ID X 1.0 OD X .048 THK | 2 |
| 16 | JM12T | ROD END, MALE, 5/8-18 | 2 |
| 17 | 90093 | CAMARO LIMITING SPACER | 2 |
| 18 | 93625A113 | NUT, HEX, NYLOCK, A2 SST, M6 X 1.0 | 2 |
| 19 | 31310 | HEADLIGHT BRACKET | 2 |
| 20 | 61001 | O-RING, BUNA-N, 1.10 ID X 1.52 OD X .210 W, -320 | 2 |

SPLPARTS CONFIDENTIAL:
THIS DOCUMENT AND THE INFORMATION CONTAINED IN IT ARE
CONFIDENTIAL, AND CANNOT BE COPIED OR DISCLOSED IN WHOLE OR
IN PART WITHOUT THE EXPRESS WRITTEN CONSENT OF SPLPARTS.

SPLPARTS INC.

| | | |
|------|-----------|--------|
| SIZE | PART NO. | REV. |
| A | FLCA CAM6 | |
| FILE | SCALE | SHEET |
| | 1:4 | 1 OF 1 |

Thank you for your purchase of this SPL Parts performance suspension product. Please follow these instructions exactly to ensure that the product is able to function to the best of its ability, and you can achieve the most performance out of your vehicle.

1. Jack or raise the front end of the car and remove the front wheels.
2. Remove the headlight adjuster from the OEM lower control arm before removing the arm, otherwise you may can break it while removing the arm.
3. Remove the ball joint nut at steering knuckle, then the fastener at the subframe end of the arm.
4. Use a prybar to remove arm from steering knuckle, then remove the control arm.
5. Place the Socket Head Cap Screw (13) through the knuckle, and see how much you will have to clearance for the bolt to pass through, using either a 5/8 drill or file. Some knuckles require this and others don't. It should only require a few thousandths to allow the bolt to pass through.
6. Remove the rod end (16) from the assembly and install the ride height sensor bracket (19) over the threads. The spacer (7) should hold it in place. Reinstall into the arm. This bracket will maintain OE position of the ride height sensor.
7. Adjust the length of the SPL arm by holding the rod end (16) and the arm (1) and rotating the double adjuster (6) to match the length of the OEM arm as best as possible, and match the other SPL control arm to that length. This will make alignment easier later.
8. Tighten the Blue Titanium Socket Head Cap Screws (3, 4) on the body (1) and clamp (5) until the assembly is unable to rotate, a maximum of **150 IN. lbs. DO NOT OVERTORQUE.**
9. Install the SPL Parts Control Arm at subframe end first where the two FLCA Spacers (7, 17) should fit. Tighten to 100 ft. lbs. We suggest checking this bolt after the first 100 miles for tightness, or after your first track session.
10. Install at the knuckle. The tapered spacer (9) should fit in the knuckle

snuggly, with the smaller side of the taper inside the knuckle and the larger side sticking out. Place the bolt (13) through the bottom of the spherical bearing (2). If your car is not lowered, the tapered spacer (9) will put you at OEM roll center location. If you are doing roll center correction, the roll center spacers (10, 11, 12) will go between the tapered spacer (9) and the spherical bearing (2). If you have a lowered vehicle, you must sweep your suspension from full droop to full compression to ensure the bearing (2) does not go out of articulation anywhere in the suspension travel. Not doing this could result in **dangerous** bearing failure. We suggest removing the spring from the shock/coilover to make sure the suspension is travelling through its full sweep, as the shock should be the limiting factor of your travel, not our arm.

11. Tighten the 5/8-18x5 Socket Head Cap Screw (13) to 100 **ft. lbs.** Make sure to lubricate the threads; motor oil is fine. Check this bolt after 100 miles or the first track session. The tapered spacer (9) may seat a bit deeper after driving, so make sure to check this bolt.

12. Install the ride height sensor into the ride height sensor bracket with the M6 Nylon Hex Nut (18)

13. Have the car professionally aligned, as replicating the original settings is nearly impossible. It may be necessary to adjust the toe in order to drive the car to an alignment shop. Take these instructions with you to ensure that the arm is adjusted correctly. Always check articulation of the bearing.

14. Be safe, and enjoy your new upgrade!

SPL Double Adjuster

The hybrid adjuster is what is known as a **double adjuster**. On the outside, the thread is left-handed. On the inside, the thread is right-handed. When the suspension arm is installed, turning the hybrid adjuster will allow you to lengthen/shorten the assembly.

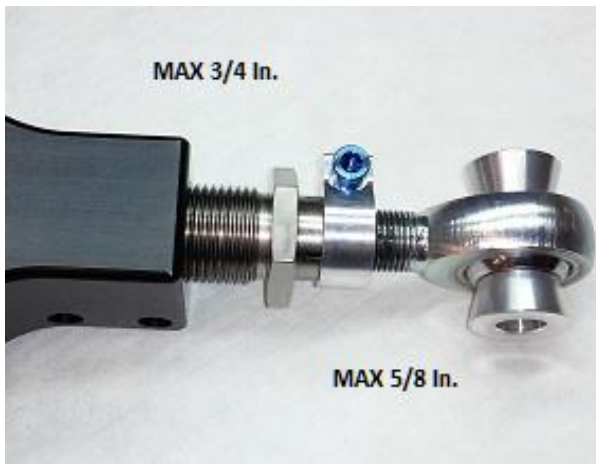
When lengthening/shortening, be sure to keep the arm and rod end from freely rotating when you turn the adjuster. Do not make the following mistakes (threading out **only** the adjuster or threading out **only** the rod end):



Overextended adjuster.



Overextended rod end.



Properly adjusted.

This picture shows a properly threaded adjuster. The rod end (heim joint) will thread out about 2/3 the length of the adjuster. Note the maximum adjustment limits shown.

You'll notice in the pictures that the threads of the rod end and the adjuster have some dark material on them. That is anti-seize compound we apply to all of our products so that adjustments should be easy and trouble free for quite some time.



The advantage of the hybrid adjuster is that you can easily keep the rod end bearing centered during and after alignment. Make sure to keep the bearing centered as shown.

ONE-YEAR LIMITED WARRANTY AND DISCLAIMER

All SPL brand products are intended for **Off Road Use Only** and carry a one year limited warranty. See below for details. All other branded products carry their respective manufacturer warranty.

SPL PRO suspension products warranted to be free of defects in material and workmanship for one (1) year from the date of purchase.

If a product fails to meet specifications, SPL PARTS INC will, at its election, repair, replace, or make appropriate adjustment, if SPL PARTS INC determines to its satisfaction that the product is defective in material or workmanship, i.e. contains a defect arising out of the manufacture of the product and not a defect caused by other circumstances, including, but not limited to accident, misuse, abuse, unforeseeable use, neglect, alteration, improper installation, improper adjustment, improper repair, or failure caused by other equipment or interaction with other equipment. SPL PARTS INC is not responsible for labor charges, removal charges, installation, or other incidental or consequential costs. In no event shall the liability of SPL PARTS INC exceed the purchase price of the product.

SPL PARTS INC makes no other warranties, either expressed or implied, including limitation warranties as to merchantability or fitness for a particular purpose. SPL PARTS INC shall not be liable for, and buyer assumes all risk of, any advice or failure to provide advice by SPL PARTS INC to buyer regarding the product or use and installation of product. SPL PARTS INC shall not be liable for any special, incidental or consequential damages.

If the purchaser of the product shall fail to pay when due any portion of the purchase price, or fail to meet any terms required under contract agreed on at time of purchase, all warranties and remedies granted may be terminated.

Using any SPL arm as a tie/strap down point for a dyno session or transport will void the warranty.